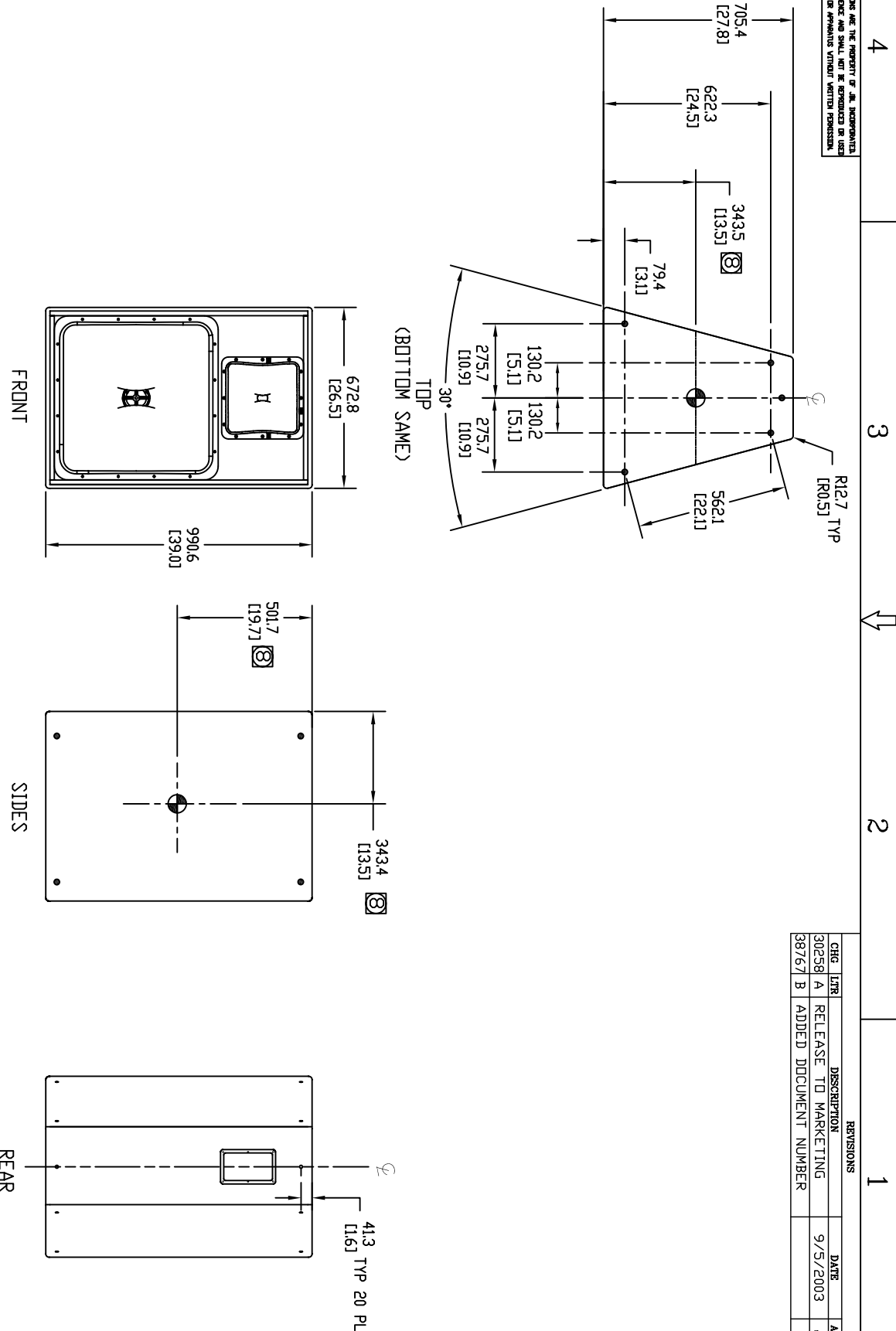


THESE DRAWINGS AND SPECIFICATIONS ARE THE PROPERTY OF JBL, INCORPORATED. THEY ARE ISSUED IN STRICT CONFIDENCE AND SHALL NOT BE REPRODUCED OR USED AS THE BASIS FOR MANUFACTURE OR REPAIRS WITHOUT WRITTEN PERMISSION.

REVISIONS			
CHG	INTR	DESCRIPTION	DATE
30258	A	RELEASE TO MARKETING	9/5/2003
38767	B	ADDED DOCUMENT NUMBER	AR



1. COMPONENTS: LF – 1X 2169H; HF – 1X 2431H
2. INPUT CONNECTORS: 4 TERMINAL BARRIER STRIP AND 1X NEUTRK NL4 SPEAKON.
3. GRILL: 16 GA. PERFORATED CRS, POWDERCOATED BLACK, BLACK FOAM BACKING.
4. MATERIALS: 16MM (5/8") FINISH BIRCH PLYWOOD.
5. FINISH: BLACK DURAFLEX
6. SUSPENSION POINTS: "••" 20 TOTAL; 5 EA TOP AND BOTTOM, 4 EA SIDE, 2 REAR; M10 THREAD PATTERN.
7. WEIGHT: 65.7 kg (145 LBS)

Ⓢ CENTER OF GRAVITY (CG) Ⓢ

NOTES: (UNLESS OTHERWISE SPECIFIED)

TOLERANCES (UNLESS OTHERWISE SPECIFIED)			
XXX	± .063 INCH		
XX	± .125 INCH		
ANGULAR DIMENSIONS	DF 0°±30°		
FRACTIONAL DIMENSIONS	± 1/32		
ALL DIMENSIONS ARE IN INCHES			
DO NOT SCALE DRAWING			
JBL PROFESSIONAL A Harman International Company Northridge, California 91329 U.S.A.		TITLE PD5200/95	
SIZE A		DRAWING NO. 444328	
SCALE NTS		REV B	
SHEET 1		OF 1	